

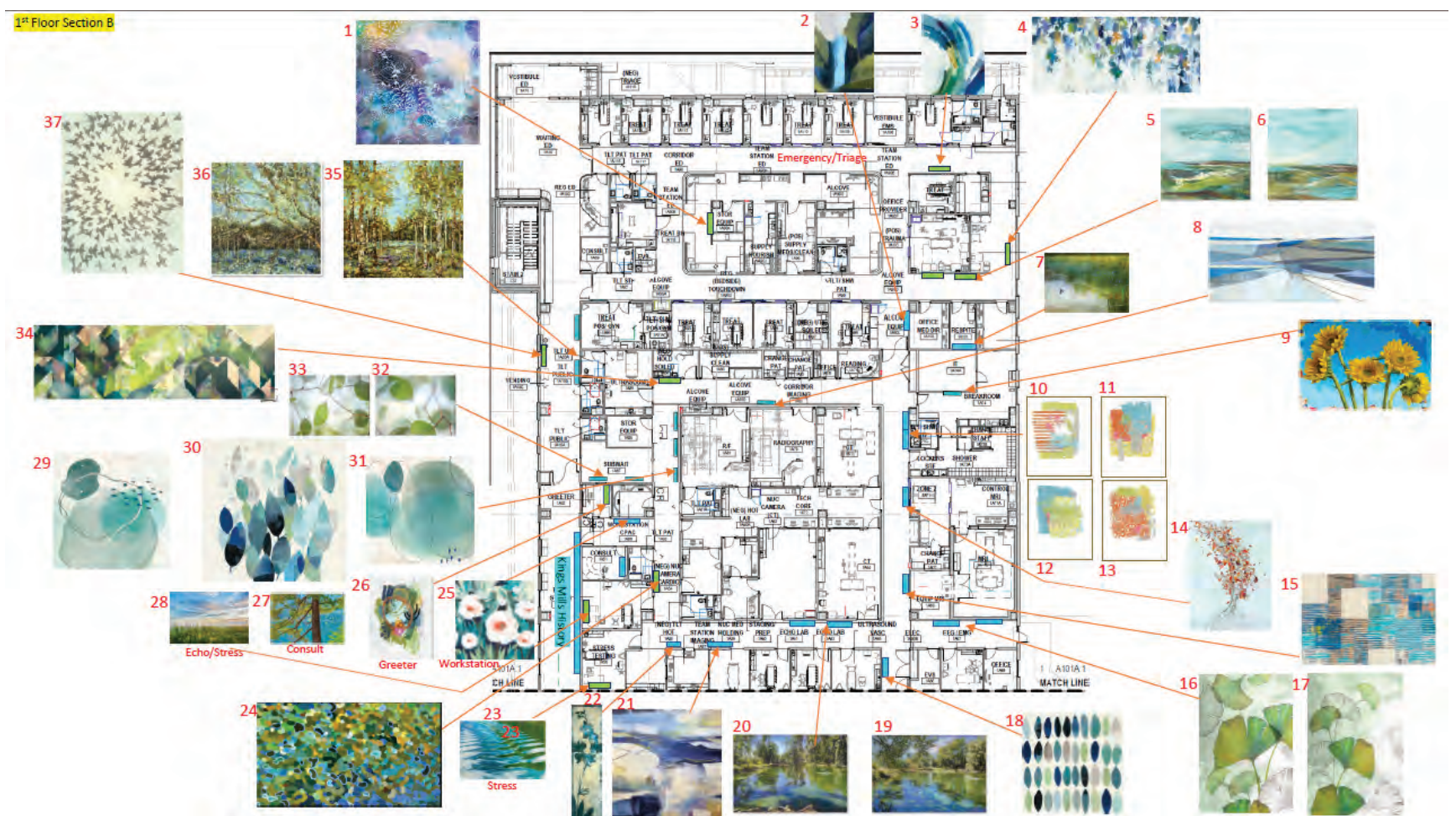


Mercy Health's new 60-bed, state-of-the-art hospital and cutting-edge medical office building in Kings Mills is a beacon of advanced healthcare for Mason and the surrounding communities. In keeping with their vision of excellence, they sought more than just exceptional medical services; they wanted the environment to reflect the same level of care and innovation.

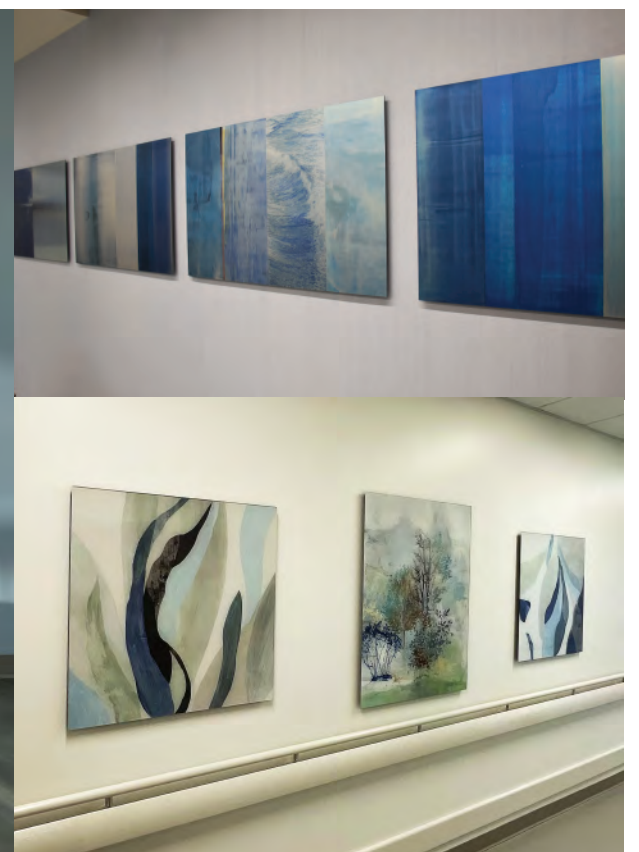
The hospital trusted Creative Palette to specify framed art, thoughtfully chosen to complement the modern design of the facility. In addition to the framed pieces, they invested in original art curated by Creative Palette, creating a unique

and inspiring atmosphere for both patients and staff.

To further elevate the space, they envisioned a stunning donor wall—one that not only recognizes their generous benefactors but also stands as an artistic centerpiece, blending seamlessly into the contemporary aesthetic. This commitment to beauty and craftsmanship mirrors the hospital's dedication to providing top-tier healthcare and an environment of healing and inspiration.



After a debrief of the hospital executives Creative Palette established a color foundation based on the mill work, paint, flooring and seating. Direction included mostly soft abstracts with references to nature and cool earth tones. With a mix of stretched canvases, framed and matted prints and some non-traditional materials Creative Palette generated a beautiful flow of art on all four floors of this cutting edge facility.

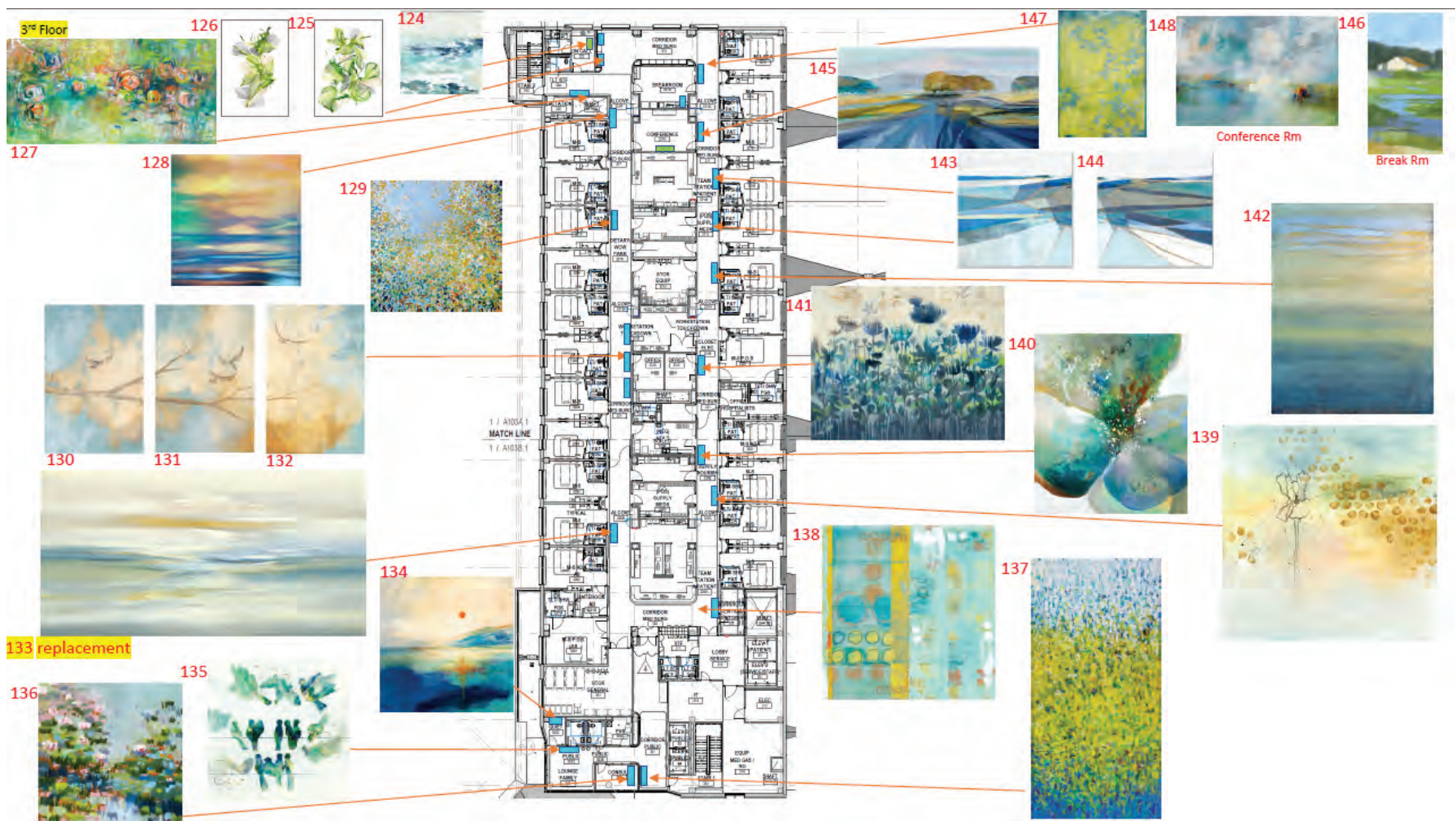


CASE STUDY



FINE ART SOLUTIONS

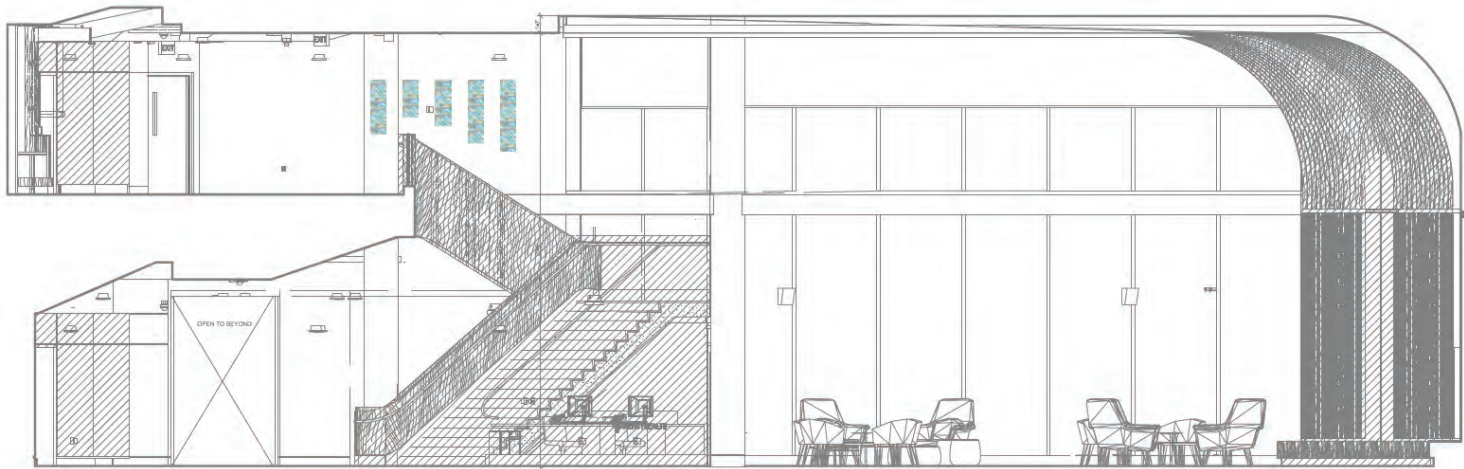
A family of frame profiles was specified to not only complement the individual pieces but also create a cohesive mix of color and texture throughout the hospital. This thoughtful selection ensured that each piece of artwork harmonized with the overall design, enhancing the environment and promoting a calming atmosphere for patients and visitors alike.



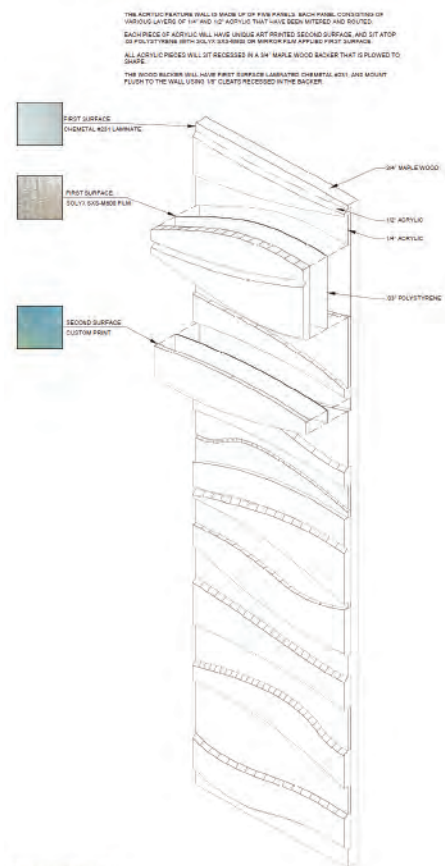
CASE STUDY



FINE ART SOLUTIONS



Mercy wanted to include some completely original pieces in their main lobby, with one standout being the unique wave wall pattern. This design playfully integrates materials used throughout the hospital, with stacked layers that add dimensional interest and symbolize the many layers of support within the new facility. The reflective quality of some of the materials beautifully captures daylight and sunshine, altering the wall's appearance as the day progresses.

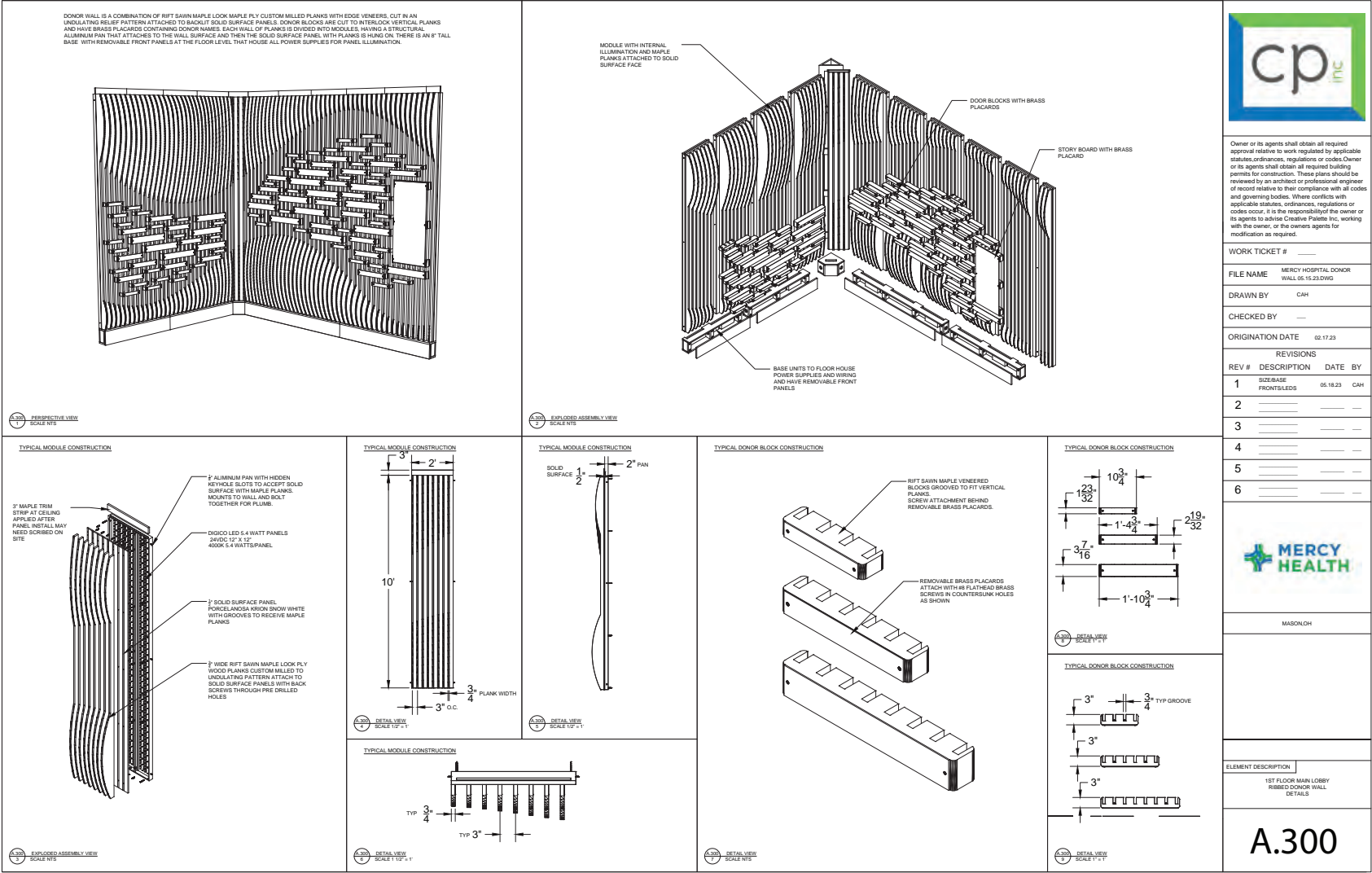


CASE STUDY

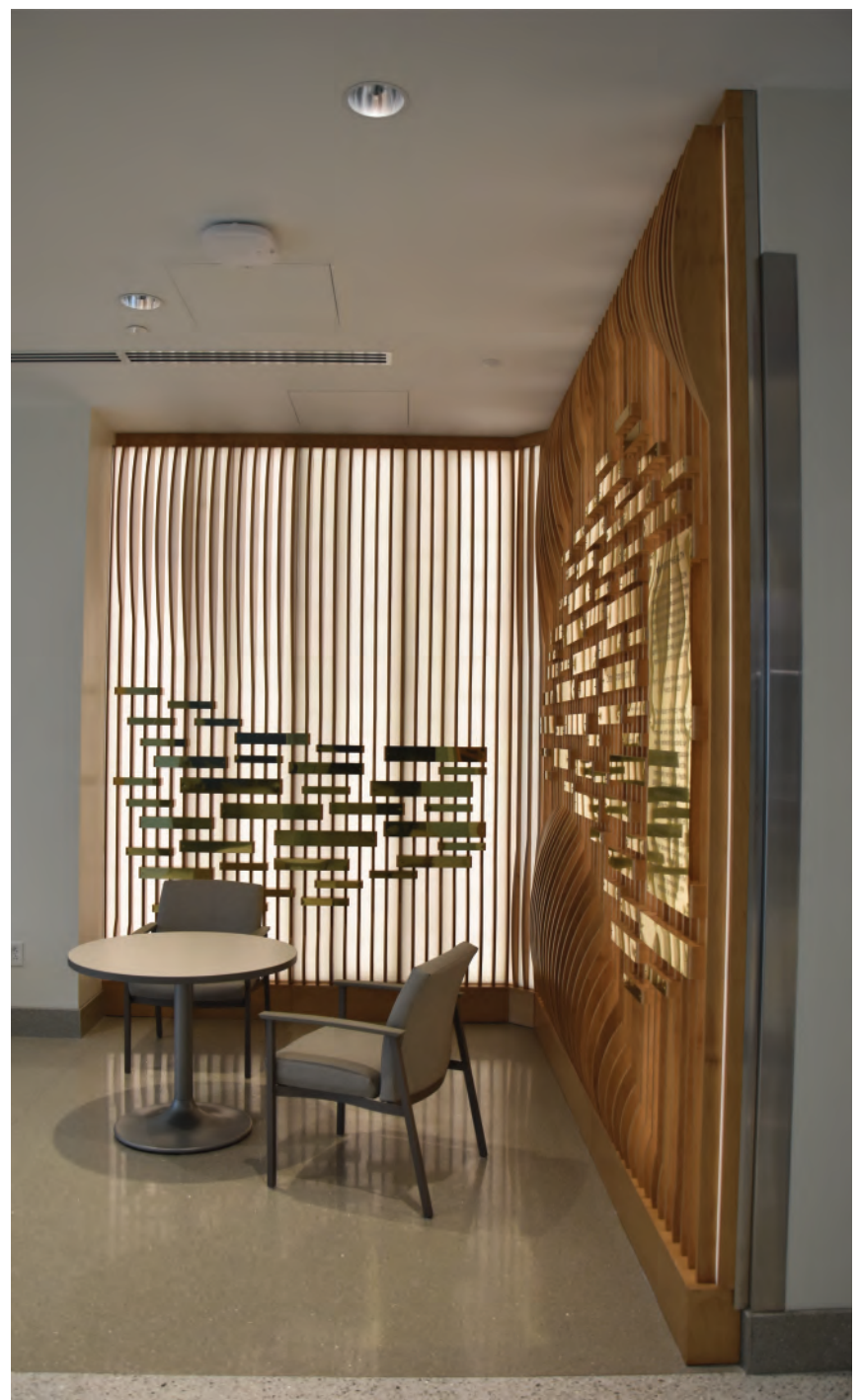


FINE ART
SOLUTIONS

A stunning focal point in the main lobby is the dynamic donor wall. This masterpiece features backlit panels that illuminate a fowing, undulating wave pattern. As you approach and move past the wall, the waves appear to roll with movement, creating an interactive and engaging visual experience. Crafted with CNC-routed and laminated oak, the design incorporates a clever plaque system that allows for easy additions or modifications without disrupting the overall balance of the piece. The donor wall’s organic hierarchy of brass plates not only reflects thoughtful engineering but elevates the structure into a work of fine art. The combination of form and function ensures this installation remains a timeless tribute to the community & patron generosity.



CASE STUDY



CASE STUDY



FINE ART SOLUTIONS

An essential aspect of the project involved the careful re-purposing of two authentic stained-glass windows from the hospital's original chapel. These historic windows hold deep significance and were thoughtfully reintegrated into the new facility. The first window was placed alongside the hospital's mission statement, creating a striking visual connection between the institution's values and its rich heritage. The second window now graces the newly constructed chapel, maintaining its sacred presence in a place of reflection, hope and prayer. To ensure these exquisite works of art are displayed and preserved for decades to come, Creative Palette crafted elegant oak-veneered LED light boxes. These light boxes provide consistent illumination, allowing the stained glass to shine brightly at all hours, showcasing their intricate beauty and timeless craftsmanship in a way that honors the hospital's history.



Oak veneered light box

Laser cut letters

Printed hardwood

