

# CASE STUDY

puttery

## ARCHITECTURAL SOLUTIONS

Location: The Colony, TX  
Architect: Barker Nestor  
GC: Crane Construction  
Challenge: Reduce weight and install expense remaining true to the design  
Solution: **AERIAL**

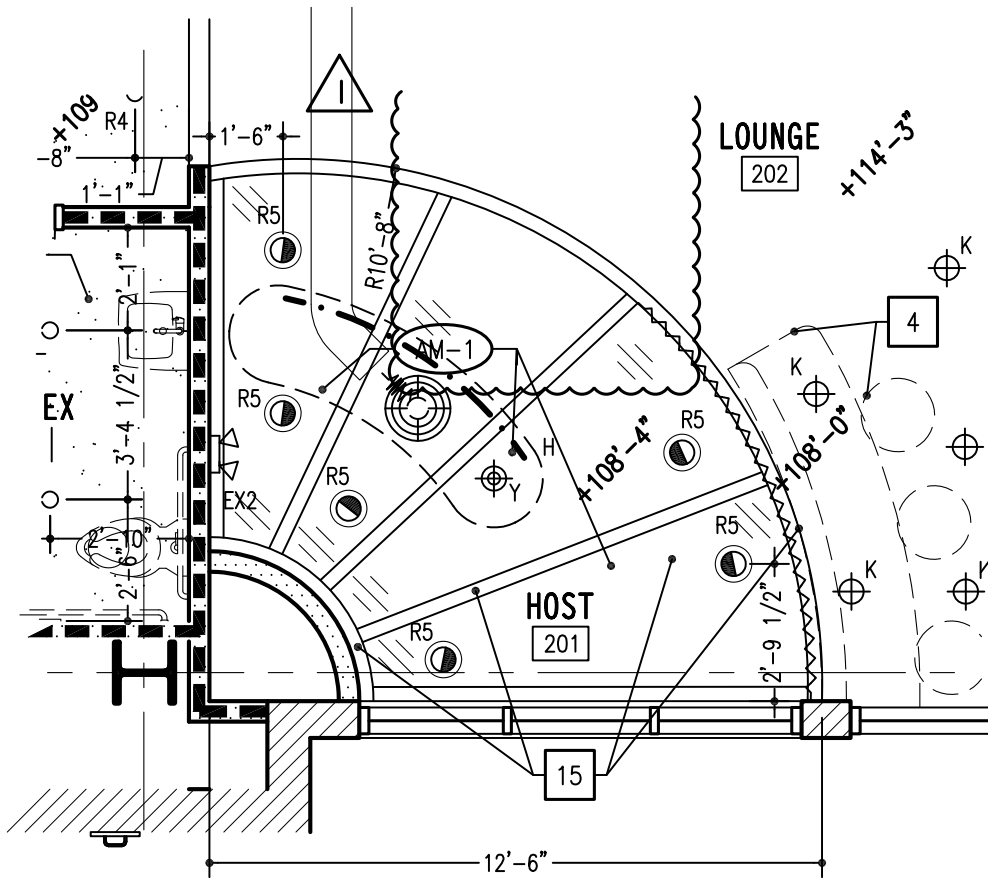
Creative Palette was thrilled to take on the challenge of reducing weight and speeding up installation for this fantastic destination in Dallas. We immediately started with engineering an **AERIAL** solution, recognizing it as the optimal approach for this project. Leveraging our expertise and innovative techniques, we delivered a lightweight yet robust design that perfectly meets the client's needs while enhancing the overall aesthetic and functionality of the space. This project exemplifies our commitment to pushing the boundaries of creativity and engineering, ensuring every detail contributes to a superior experience for our clients and their visitors.

Project Piece

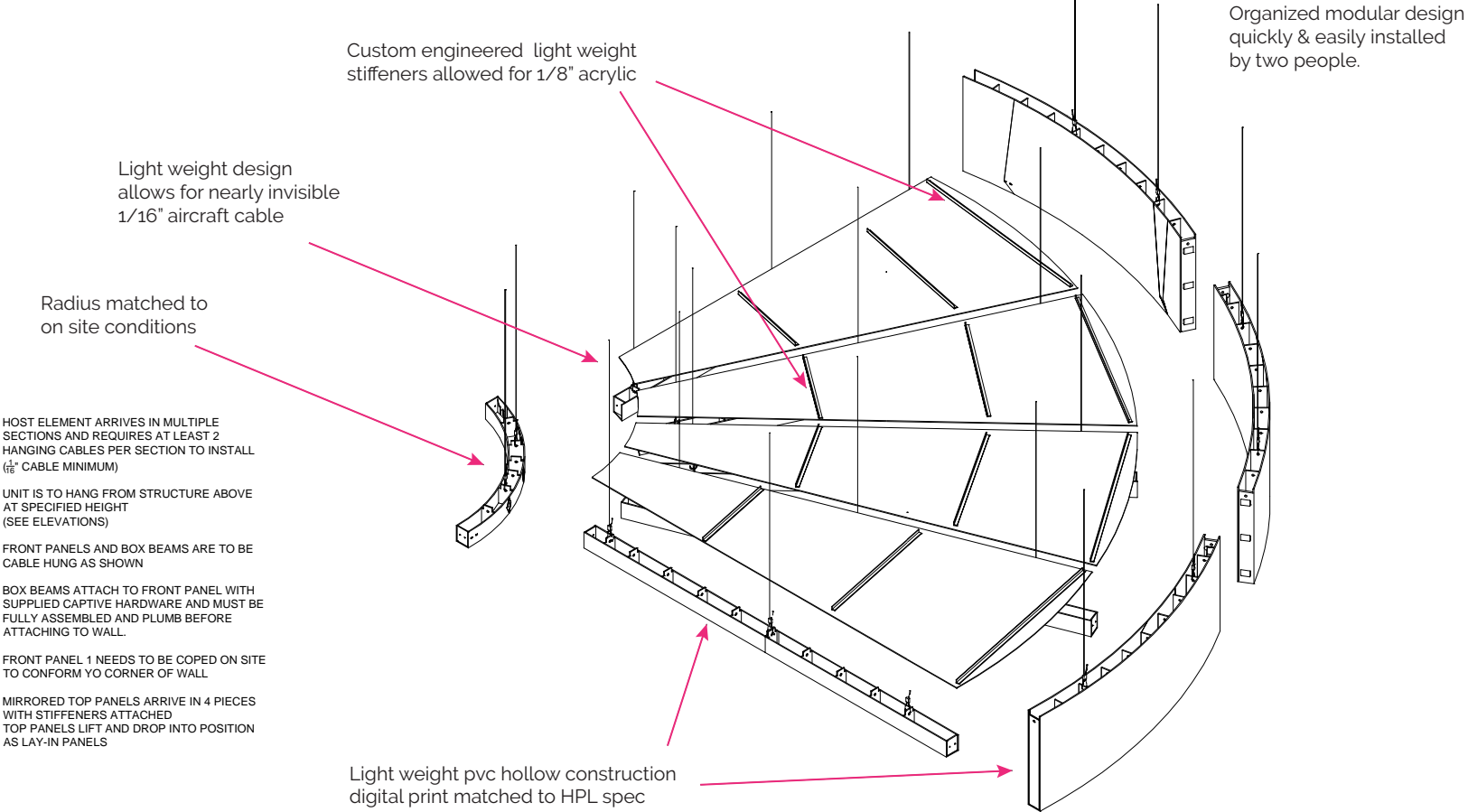
### Hostess Stand Mirrored Overhead

This unique overhead threatened to weigh thousands of pounds with its antique mirror and a 19' radius 2' tall beam. Our **AERIAL** solution combined custom printed light weight acrylic mirror with color matched and engineered PVC. The unit was shipped broken down with easy to follow install instructions for general contractor install.

Architect's  
Plan &  
Rendering



**AERIAL**  
Solution  
Total weight  
212 Lbs

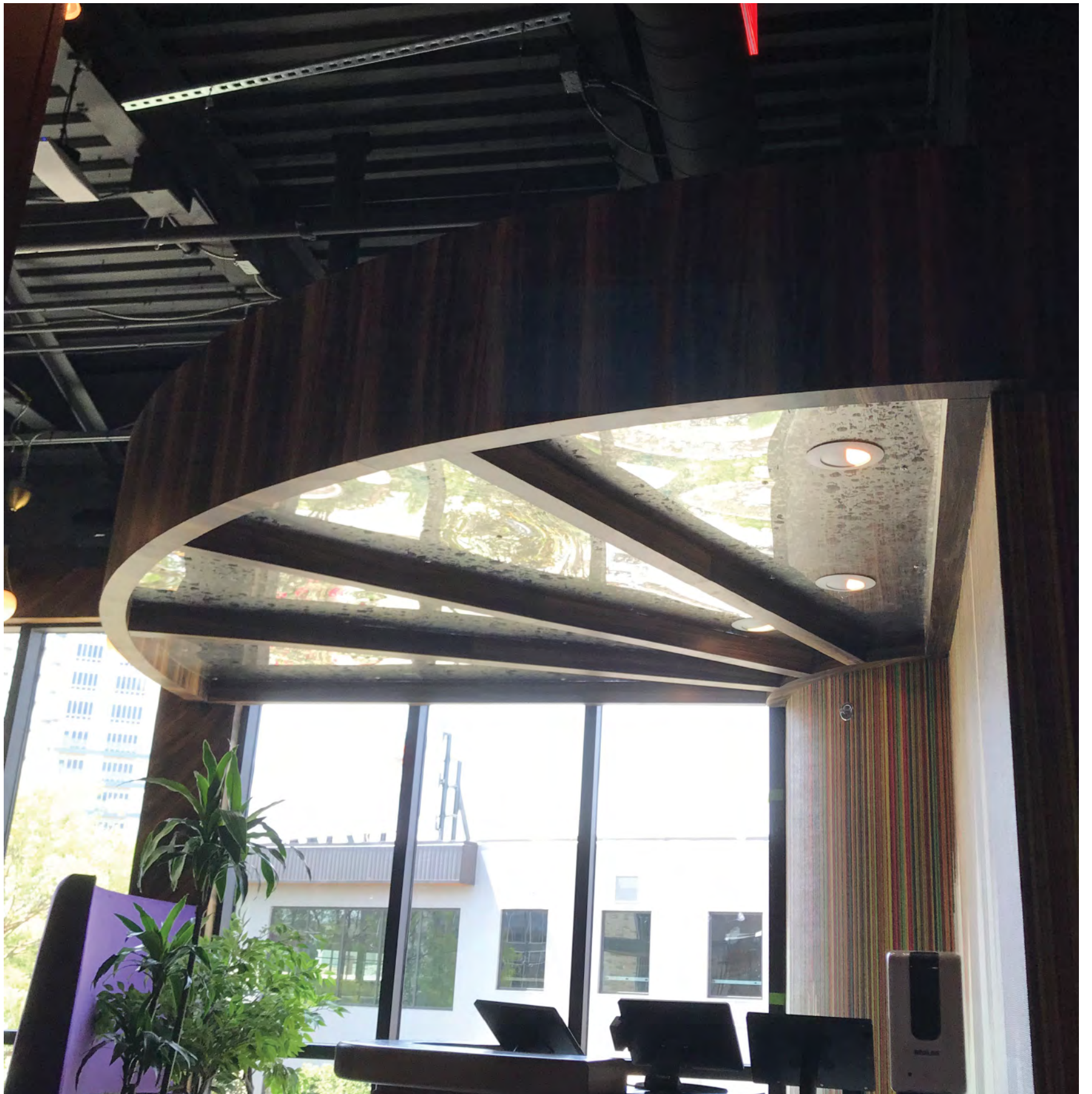


# CASE STUDY

puttery

ARCHITECTURAL  
SOLUTIONS

Installed  
AERIAL



# CASE STUDY

puttery

## ARCHITECTURAL SOLUTIONS

Project Piece

### VIP Lounge Feature Light & Hanging Trellis

Two additional beautiful overhead installations also required custom bracing for art glass fixtures and some concealed hang points. Creative Palette was very pleased to accommodate all the requirements for these two pieces, showcasing the versatility of our AERIAL product. With its endless customization, AERIAL allows us to meet unique design challenges and deliver stunning, functional architectural installations. Our team's expertise ensured that every detail was meticulously planned and executed, resulting in a seamless integration that enhances the overall aesthetic of the space. These installations are a testament to our commitment to excellence and our ability to transform complex concepts into reality.



AERIAL  
Solution  
Total weight  
223 Lbs

CEILING CLOUD ARRIVES IN 3 SECTIONS AND  
REQUIRES AT LEAST 6 HANGING CABLES PER  
SECTION TO INSTALL  
( $\frac{1}{16}$ " CABLE MINIMUM)

UNIT IS TO HANG FROM STRUCTURE ABOVE  
AT SPECIFIED HEIGHT  
(SEE ELEVATIONS)

CLOUD SECTIONS ALIGN USING PROVIDED  
INTERLOCKER TABS AND SECURE TOGETHER  
USING 1" DRYWALL TYPE SCREWS.

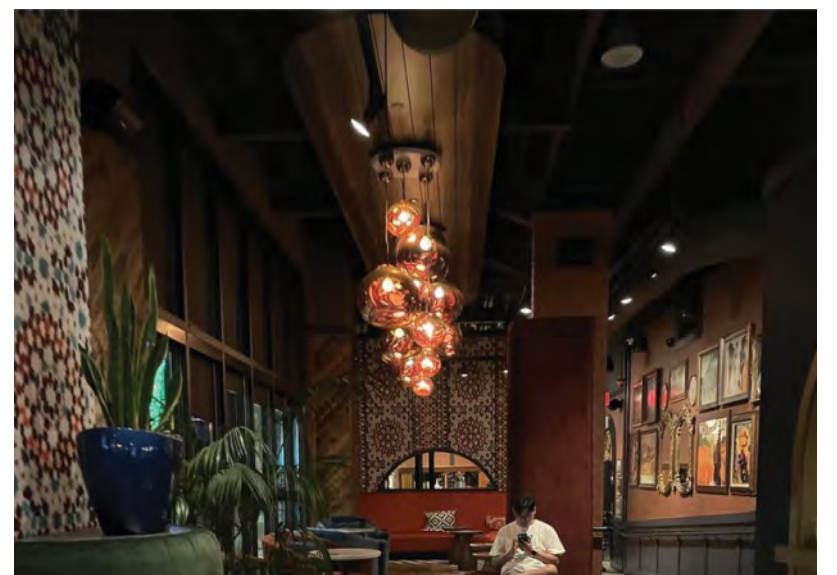
Delivered in three light  
weight sections

Steel reinforced  
hang points

Custom engineered  
reinforcement for light  
attachment

Light weight pvc hollow construction  
digital print matched to HPL spec

Installed  
AERIAL



# CASE STUDY

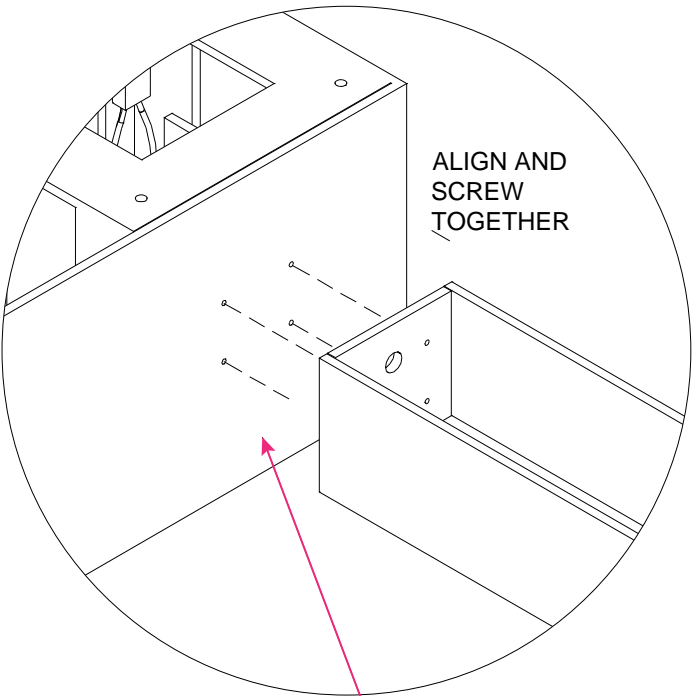
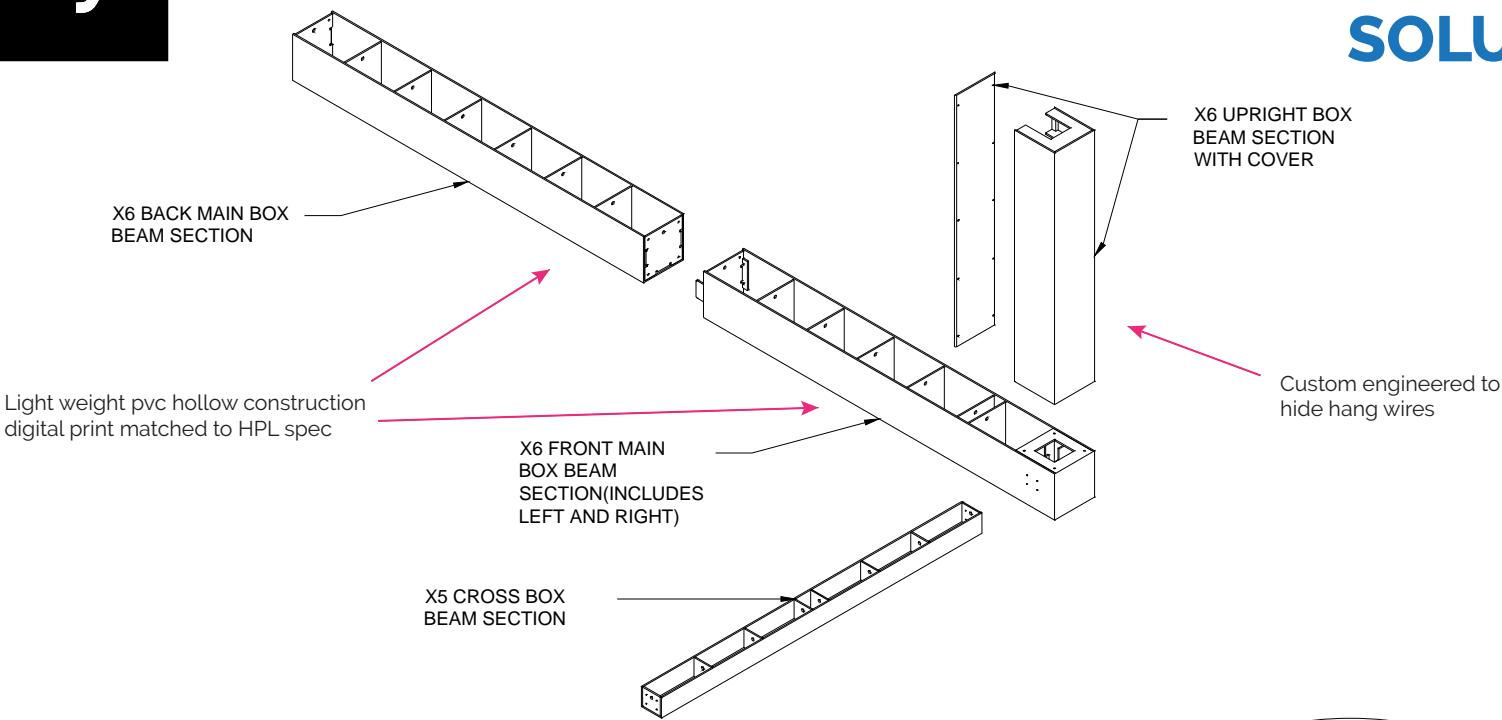
puttery

## ARCHITECTURAL SOLUTIONS



AERIAL  
Solution  
Total weight  
223 lbs

Installed  
AERIAL



Every connection point CNC set for fast and accurate assembly



# CASE STUDY

puttery

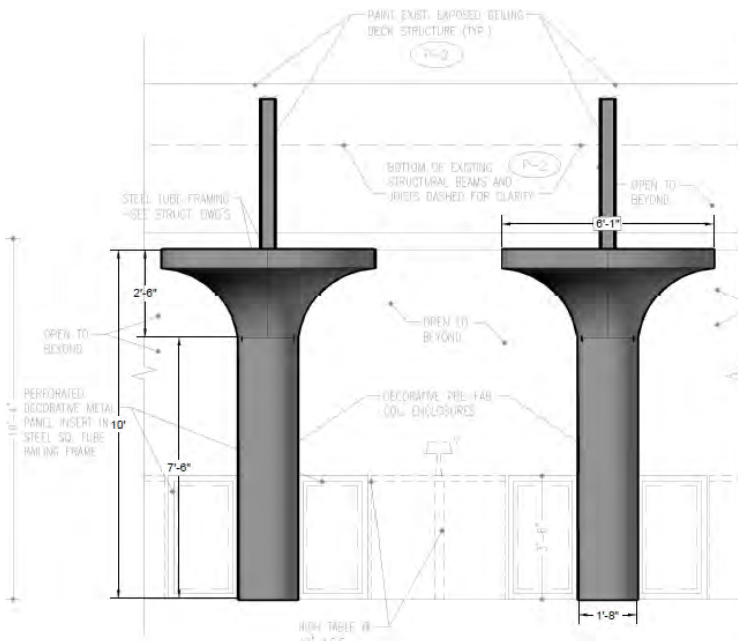
## ARCHITECTURAL SOLUTIONS

Project Piece

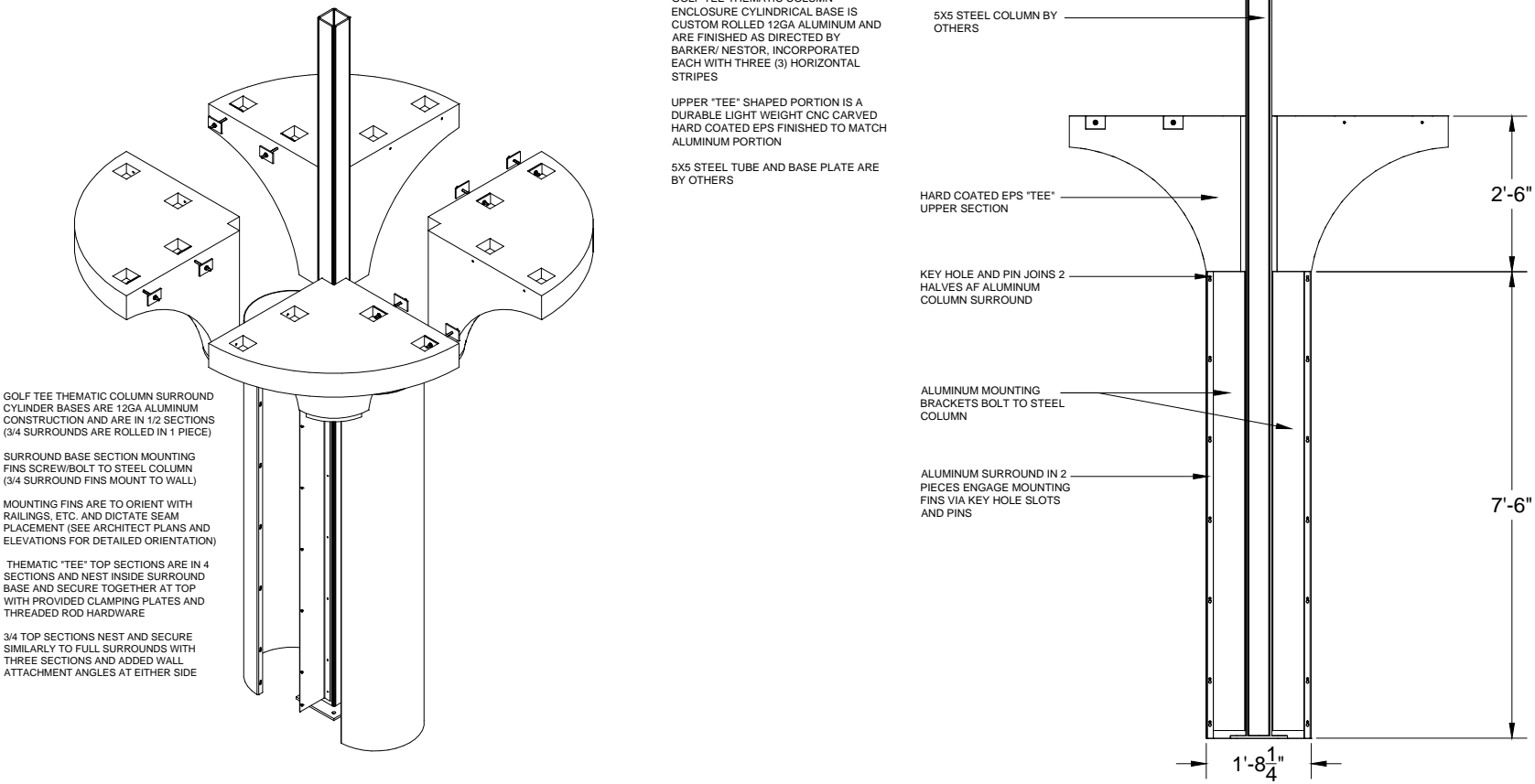
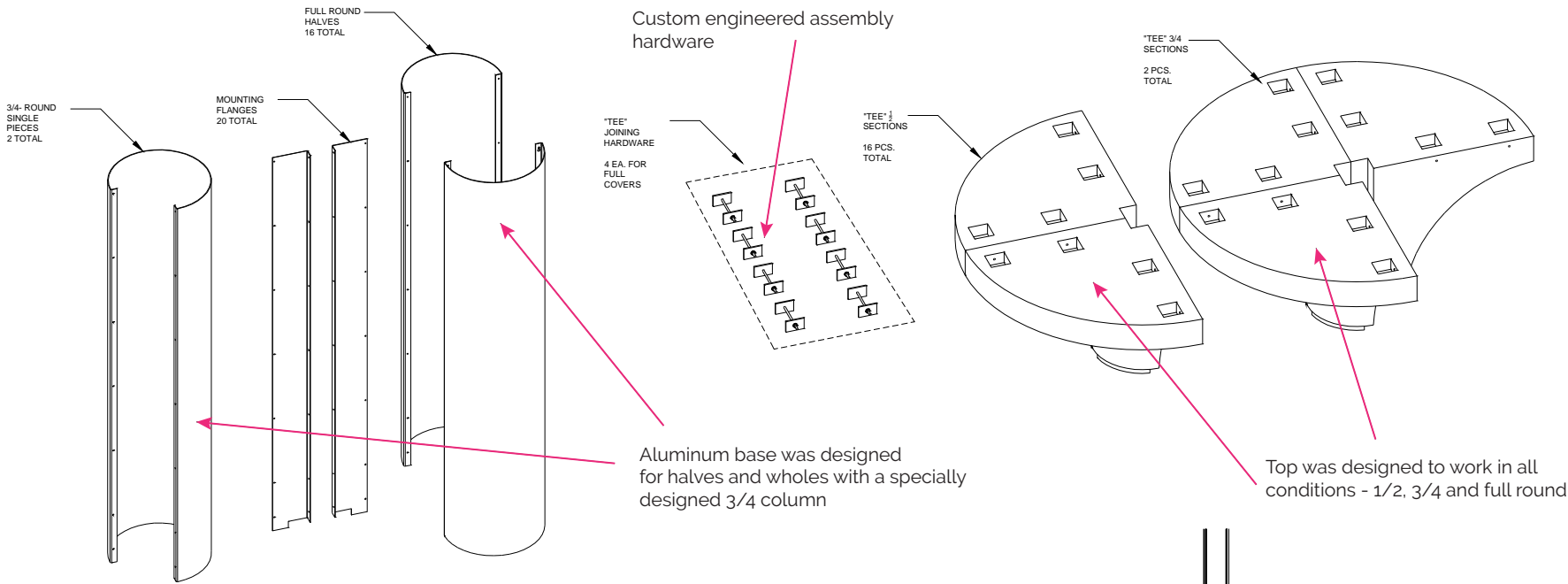
### Thematic Golf Tees

These fantastic supersized golf tees presented several challenges. They needed to be extremely durable at the base for high-traffic areas while remaining lightweight at the top. We addressed this by applying our proprietary **ARTISTA** finish to the rolled aluminum bottom and using lightweight **AERIAL** fabrication for the top. Additionally, these tees required various mounting and installation methods: some were designed to surround structural columns, others to stand freely, and a few to intersect with walls. Our final design met all these requirements, ensuring flexibility, durability, and authenticity.

Architect's  
Plan &  
Rendering



AERIAL &  
ARTISTA  
Solution



# CASE STUDY

puttery

ARCHITECTURAL  
SOLUTIONS

Installed  
Solution



# CASE STUDY

puttery

ARCHITECTURAL  
SOLUTIONS



See the location tour  
click or scan